



90MM



PIÉTIONNIER



VÉHICULAIRE

PROMA XL

*RINOX RECOMMANDE L'INSTALLATION DE CE PRODUIT SUR DE LA PIERRE NET

DIMENSIONS

(A)



PROMA XL

3 9/16" x 16" x 32"

90mm x 406mm x 812mm

POIDS

3500 lbs

SPECIFICATIONS

8 rangs

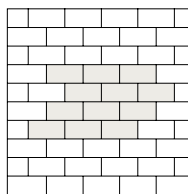
10.66 pi² par rang

85.33 pi² par palette

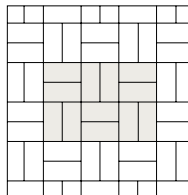
64 pi.lin par palette

INSTALLATIONS

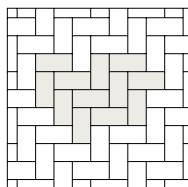
*Inspirations seulement



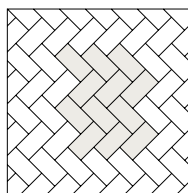
LINÉAIRE



LINÉAIRE

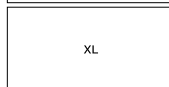
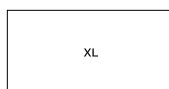


CHEVRON

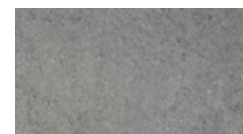


CHEVRON 45°

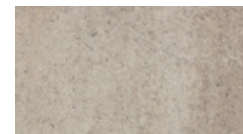
PALETTE



COULEURS

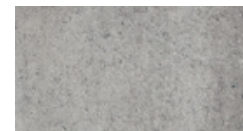


CHARBON CENDRÉ



BEIGE OKA

PREMIUM



GRIS CIEL

PREMIUM



NOIR MINUIT

PREMIUM