



60MM



PIÉTIONNIER

PROMA XL

DIMENSIONS

(A)



PROMA XL

2 3/8" x 16" x 32"

60mm x 406mm x 812mm

POIDS

3050 lbs

SPECIFICATIONS

10 rangs

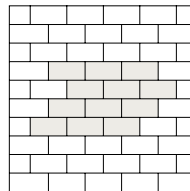
10.66 pi² par rang

106.6 pi² par palette

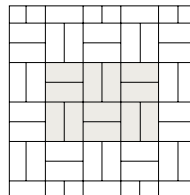
80 pi.lin par palette

INSTALLATIONS

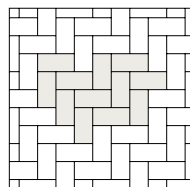
*Inspirations seulement



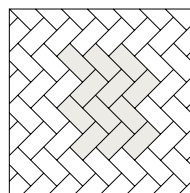
LINÉAIRE



LINÉAIRE

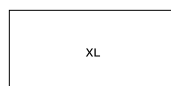


CHEVRON

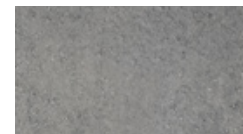


CHEVRON 45°

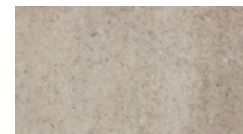
PALETTE



COULEURS

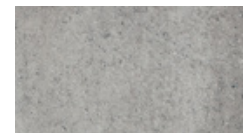


CHARBON CENDRÉ



BEIGE OKA

PREMIUM



GRIS CIEL

PREMIUM



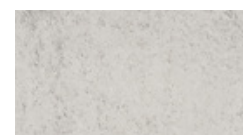
NOIR MINUIT

PREMIUM



BRUME

PRESTIGE *



BLANC D'ARGENT

PRESTIGE *

*Prestige:

Couleur qui doit être méticuleusement entretenue et utilisée dans un environnement précis pour préserver son apparence. Voir garantie.