



90MM



PIÉTIONNIER



VÉHICULAIRE

PROMA 3XL

*RINOX RECOMMANDE L'INSTALLATION DE CE PRODUIT SUR DE LA PIERRE NET

DIMENSIONS

(A)



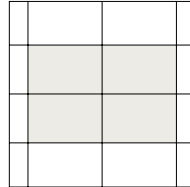
PROMA 3XL

3 9/16" x 32" x 48"

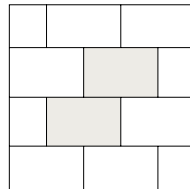
90mm x 812mm x 1219mm

INSTALLATIONS

*Inspirations seulement

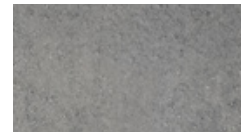


LINÉAIRE

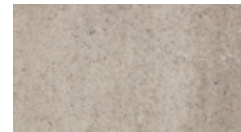


LINÉAIRE

COULEURS

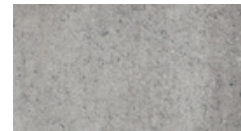


CHARBON CENDRÉ



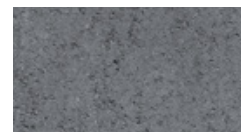
BEIGE OKA

PREMIUM



GRIS CIEL

PREMIUM



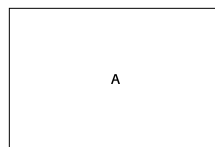
NOIR MINUIT

PREMIUM

POIDS

3570 lbs

PALETTE



SPECIFICATIONS

8 rangs

10.66 pi² par rang

85.33 pi² par palette

32 pi.lin par palette